



INDEPENDENT ELECTORAL AND BOUNDARIES COMMISSION (IEBC).

A VOTER'S GUIDE ON ELECTION DAY OPERATIONS

Our Vision

“A credible electoral management body committed to strengthening democracy in Kenya.”

Our Mission

“To conduct free and fair elections and to institutionalize a sustainable electoral process.”

Our Core Values

- Integrity
- Team work
- Independence Innovativeness
- Respect

1.0 Introduction

The 2017 General election shall be held on **Tuesday 8th August, 2017** across all the 290 Constituencies in the country and in diaspora.

2.0 Who will vote in the August 2017 Elections?

Only voters who are in the Register of Voters shall be allowed to vote.

A voter must;

- (i) Have the original identification document he /she used to register as a voter(an original national identity card or a valid Kenyan passport),
- (ii) Physically present himself or herself at his/her polling station.

3.0 Where will voting take place?

Voting on 8th August 2017 will take place in

- (i) All polling stations within the 1450 County Assembly Wards in Kenya
- (ii) Kenyan Embassies and High Commissions in Uganda (Kampala), Tanzania (Dar es Salaam and Arusha), Rwanda (Kigali), Burundi (Bujumbura), and South Africa (Pretoria).
- (iii) Designated Prisons in Kenya that are gazetted as polling stations

4.0 When does voting start and end ?

Voting in all polling stations in Kenya and in diaspora will start at **6am** and end at **5pm** local Kenyan time. In case a polling station opens late for one reason or another, polling will be extended in that polling station to recover for the lost time. All voters who will be on the queue by 5pm will be allowed to vote.

5.0 Which elective positions will a voter be voting for?

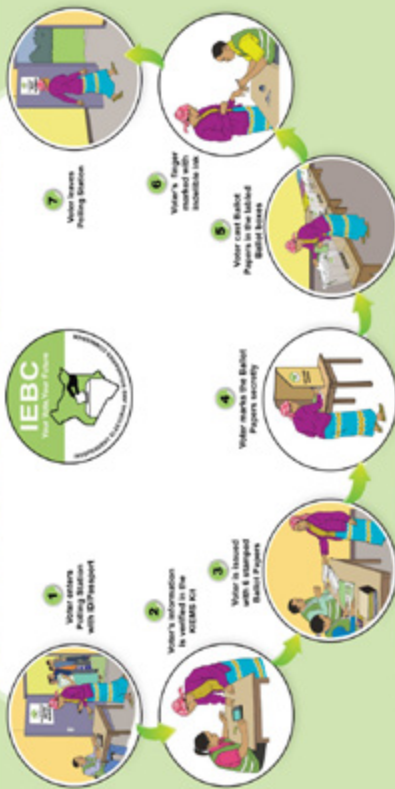
- (a) A voter in Kenya shall vote for a candidate of his/her choice in the following positions
 - (i) President
 - (ii) Member of Parliament
 - (iii) Member of County Assembly
 - (iv) Senator
 - (v) County Woman Member of National Assembly
 - (vi) Governor
- (b) A Kenyan citizen who is registered to vote in designated diaspora countries shall only vote for a Presidential candidate of his/her choice.

6.0 What will a voter do once in the polling station?

Once in the polling station, a voter is required to:

- (i) Provide his/her original ID card or a valid Kenyan passport to the IEBC clerk
- (ii) Place finger on the KIEMS kit for biometric identification
- (iii) Receive 6 stamped ballot papers from IEBC clerk
- (iv) Proceed to the polling booth
- (v) Correctly mark the 6 ballot papers in secret
- (vi) Cast each ballot paper into the corresponding ballot box
- (vii) Have his/her small finger marked with indelible ink
- (viii) Leave the polling station after voting.

VOTING PROCEDURE



INDEPENDENT ELECTORAL AND BOUNDARIES COMMISSION (IEBC)
P.O. Box 43333 - Nairobi, Kenya. Tel: +254 20 2719000. Fax: +254 20 2719001. Email: iebc@iebc.or.ke. Website: www.iebc.or.ke



Share This: [Share](#) [Print](#) [Email](#)

An illustration of voting procedure

7.0 What should a voter do if he /she cannot read nor write (Assisted voters)?

A Voter under this category shall :

- (i) Be accompanied by a person of his/her choice.
- (ii) The assisting person should be 18 years of age and above.
- (iii) The assisting person should take and sign oath of secrecy of the ballot.
- (iv) Where the assisted voter is unaccompanied, the presiding officer in the presence of agents shall assist.

8.0 What should a voter do if he/she is not identified biometrically from the KIEMS kits?

A registered voter who is not identified by use of biometrics is required to fill a statutory form FORM 32A that will enable the voter to be identified by use of his/her ID or Passport number .

9.0 Which electoral technology will be used during elections day?

For the August 2017 Elections, the Commission shall deploy the Kenya Integrated Elections Management System (KIEMS) kits in all polling stations.



A picture of a KIEMS kit

The kits will be pre-loaded with Bio-data of all registered voters in a polling station.

On the voting day, these kits will be used for:

- (i) Biometric identification of voters,
- (ii) Electronic transmission of election results

10.0 Who are the persons allowed in the Polling stations and tallying Centres

The following people are allowed in the polling stations and tallying centres

- (i) Voters
- (ii) IEBC Officials
- (iii) Security officers
- (iv) Presiding Officer (PO)
- (v) Deputy Presiding Officer (DPO)
- (vi) Polling/Counting Clerks
- (vii) Candidates
- (viii) Accredited Political Party/Independent Candidate Agents
- (ix) Accredited Media Personnel
- (x) Accredited Observers
- (xi) Any other person authorized in writing by the IEBC

11.0 Election Results Management Process

There will be 3 tallying centers for election results as illustrated below.



CONSTITUENCY
TALLYING CENTRE



COUNTY TALLYING
CENTRE



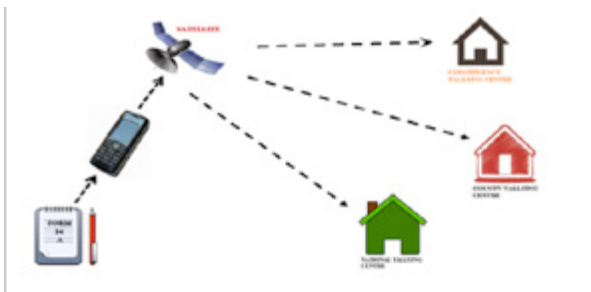
NATIONAL TALLYING
CENTRE

Drawings of election Result Tallying Centers

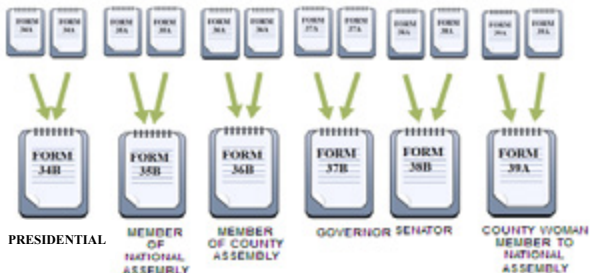
(i) Constituency Tallying Centre

The officer in charge of this centre is a Constituency Returning Officer (R.O) who tallies election results from polling stations.

Polling Station Electronic Presidential Result Transmission (FORM34 A)



Collation and Declaration of Results at the Constituency Tallying Centre



Declaration and Certification of Winner's at the Constituency level



WINNER
NATIONAL
ASSEMBLY

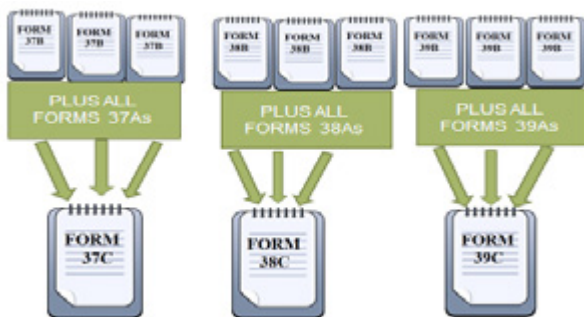


WINNER
COUNTY
ASSEMBLY

(ii) County Tallying Centre

The officer in charge of the County Tallying centre is a County Returning Officer (CRO).

Collation of Election Results at the County Tallying Centre



Declaration and Certification of Winner's at the County level



WINNER
COUNTY
GOVERNOR



WINNER
SENATOR

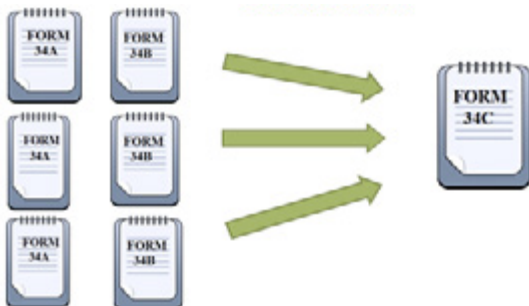


WINNER
WOMAN
MEMBER
TO
NATIONAL
ASSEMBLY

(iii) National Tallying Centre

The officer in charge of the National tallying centre is a National Returning Officer, who is the Chairman of Independent Electoral and Boundaries Commission (IEBC).

Collation of Presidential Election Results at the National Tallying Centre

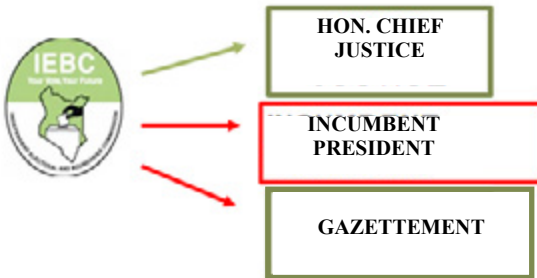


Declaration and Certification of the Presidential Winner



WINNER
PRESIDENTIAL ELECTION

IEBC Notification and Gazettement of Presidential Election Results



12.0 Peaceful Co-existence During and After General Elections

The Commission urges all citizens to maintain peaceful co-existence during and after General Elections.

Your Vote. Your Future!

Independent Electoral and Boundaries Commission

University Way, Anniversary Towers, 6th Floor

P.O. Box 45371-00100

Nairobi, Kenya



Independent Electoral and Boundaries Commission

University Way, Anniversary Towers, 6th Floor,
P.O. Box 45371 - 00100 Nairobi, Kenya
(254) 020 - 2769000/2877000
Website: www.iebc.or.ke



<https://www.facebook.com/IEBCKenya>



<https://twitter.com/IEBCKenya>